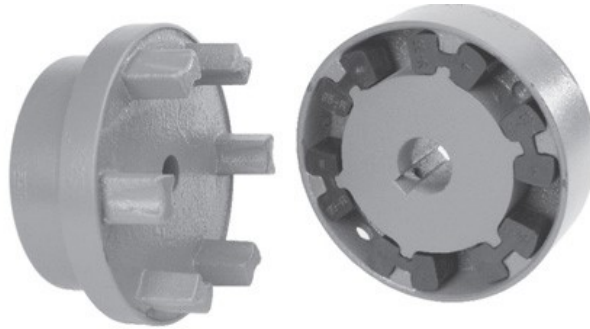


N-Flex Klauenkupplungen



NEW

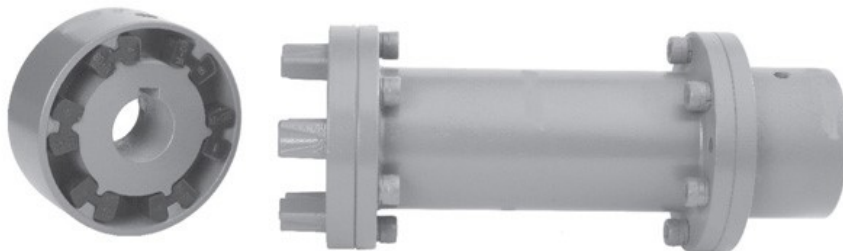
Higher Torque Rating, Larger max. Bores



RN (B)



RN (A)



RNS(H)

N-Flex Jaw couplings are now available with higher ratings and larger bores

Rathi N-Flex are supplied in 3 versions.

B– 2-Parts Jaw Coupling, Part 1 with pockets and rubber elements and Part 4 with jaws

A– 3-Parts: Part 1 with pockets and rubber elements, P2 and P3 assembly. Jaw ring P3 is bolted to hub P2. This allows remove of the jaws in the machine and easy exchange for the rubbers.

H– 4-parts Spacer coupling, P1, P6 and P7 and P5

Rathi N-Flex couplings are all balanced to G6.3, phosphated surfaces, and with ATEX.



General Information

RATHI manufactures since 1982 couplings. In 2022 we made a complete redesign and increased torque ratings and bore diameters in the hubs. On some sizes we could increase the max. speed. Now it might be possible to use a smaller size in the application.

Feature of Rathi couplings:

- Rathi offers a wide range of elastomeric and metal couplings. Made to European standards, interchangeable to leading brands in the market. This makes the couplings interesting for OEM and for spares.

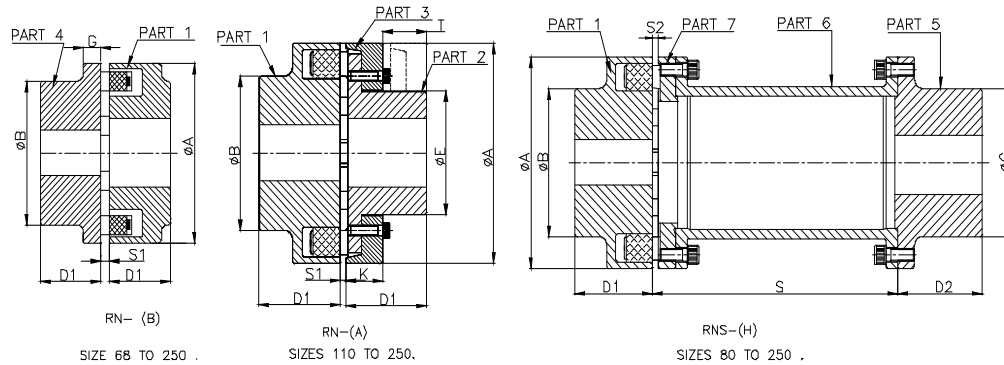
- Manufactureed to ISO 9001
- Distribution in Europe and Asia provide fast delivery.
- Flexible design and manufacturing for small, medium and large series.
- High quality raw material and high percentage of inhouse manufacturing.
- Modern machins.
- ATEX for all standard couplings.
- Manufacturing of elastisc elements in our own factory.
- Our own galvanization and surface treatment.
- Environmental protection is very important for us.

Typical Applications

- Waterpumps
- Mudpumps
- Waste water pumps
- API Pumps
- Industrial fans
- Gearpumps
- Compressors
- Hydraulic Drives
- Split Case Pumps
-

N-Flex Coupling

Dimensions



Size and Version	Nominal torque			MAX. Speed. (RPM)	MAX. BORE (mm) Part NR.			Dimensions mm									
	Nm				1/5	4	2	ØA	ØB	ØC	ØE	D1	D2	G	K	T	S
	NITRILE 80 Shore A	PU 92 Sh A	H-Trans 55 Shore D														
68 B	46	69.	115	7000	28	30	-	68	46	-	-	20	-	8	-	-	-
80 B,H	94	141	235	6000	30*	44	-	80	68	55	-	30	45	10	-	-	100 140
95 B,H	134	201	335	5500	49	56	-	95	76	70	-	35	45	12	-	-	100 140
110 A,B,H	234	365	608	5300	49	56	38	110	86	80	62	40	50	14	20	33	100 140 180
125 A,B,H	335	503	838	5100	58	62	45	125	100	90	75	50	50	18	23	38	100 140 180
140 A,B,H	530	795	1325	4900	64	65	50	140	100	100	82	55	65	20	28	43	140 180
160 A,B,H	823	1235	2058	4250	70	70	58	160	108	108	95	60	70	20	28	47	140 180
180 A,B,H	1313	1970	3283	3800	82	82	65	180	125	125	108	70	80	20	30	50	140 180
200 A,B,H	1970	2955	4925	3400	86	86	75	200	140	140	122	80	90	24	32	53	180 200 250
225 A,B,H	2392	3588	5980	3000	92	92	85	225	150	150	138	90	100	18	38	61	180 200 250
250 A,B,H	3978	5967	9945	2750	102	102	95	250	165	165	155	100	110	18	42	69	200 250

All dimensions in mm

Gap S1 = 2 mm for Sizes. 68 - 140, 3 mm for sizes. 160—225, 4 mm for size. 250

Gap S2 for Type H = 4 mm for sizes 80—140, 6 mm for sizes 160 bis 225, 8 mm for size 250

Standard bore tolerance H7 keyway to DIN 6885 tolerance JS9. Other tolerances are possible, consult sales for details.

S = Standard DBSE (Distance between shaft ends)